

SHAPING FRAGMENTS

Prints and Multiples by Chloe Alexander, Polly Apfelbaum, Jeffrey Gibson, Yaron Michael Hakim, Crystalle Lacouture, Louise Nevelson, Yuri Shimojo, Frank Stella, Yu-Wen Wu

July 11 to August 10, 2024

(Brookline, MA – June 12, 2024) In early 2021, a longtime resident of the Boston area visited Praise Shadows with a thick binder of original invoices, letters, and photographs that documented a significant private art collection belonging to her late parents. The artworks were acquired from New York and Boston galleries in the 1970s and 1980s, and never changed hands. For the first time, two of the most significant pieces from this collection – by Louise Nevelson (1899-1988) and Frank Stella (1936-2024) – will be exhibited and offered publicly. We are pleased to present *Shaping Fragments* as our summer group exhibition. Three of the artists: Nevelson, Stella, and Jeffrey Gibson (b. 1972), have previously represented, or are currently representing, the United States at the Venice Biennale.

Contemporary living artists from across the United States round out the exhibition: Chloe Alexander, Polly Apfelbaum, Yaron Michael Hakim, Crystalle Lacouture, Yuri Shimojo, Yu-Wen Wu. For some, printmaking is an essential component of their practice. For others, it is continuously in dialogue with other disciplines such as painting or installation. Meanwhile, some consider the collaboration with master printers as a way of deepening critical thinking about their studio work, and an opportunity to continue developing as an artist. This exhibition also speaks to the ways in which editions have played pivotal roles in artist's markets, often expanding the base of collectors.

Exhibition Highlights:



Louise Nevelson's *Full Moon* is a cast polyester resin multiple, contained in the original black painted wood frame. It was published by Pace Editions in 1980. Editions of this work are in several public collections, including The Museum of Contemporary Art, Los Angeles. Nevelson created this during a period when many prominent artists – including Donald Judd, Roy Lichtenstein, Claes Oldenburg – were creating sculptural multiples. Inspired by the ethos of Pop Art and an acceptance of mass production, editions of this type were one way of widening the audience for contemporary art.



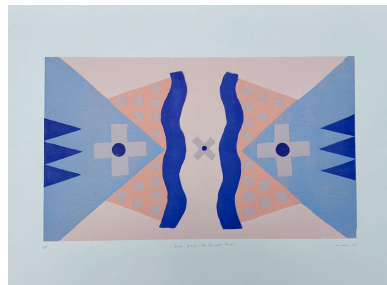
Frank Stella's *Polar Co-ordinates for Ronnie Peterson V* was published in 1980 by Petersburg Press, New York. Editions of this print are in the collections of The Whitney Museum of American Art, Dallas Museum of Art, The Broad, and more. The entire group of eight prints in the *Polar Co-ordinates for Ronnie Peterson* series was exhibited at The Museum of Modern Art, New York from 1982-1983. Stella was a fan of car racing and was a friend of the Swedish race car driver Ronnie Peterson, who was killed in an accident at the 1978 Italian Grand Prix. Stella created eight iconic prints as a tribute to his friend. Praise Shadows is exhibiting and offering edition 47/100.

**PRAISE
SHADOWS**
ART GALLERY

The family consigning this work also acquired *Polar Co-ordinates for Ronnie Peterson I, II and VIII* and all have remained in the private collection since 1980.



Jeffrey Gibson's *Moss and Sunshine (THIS BURNING WORLD)* is a fine art pigment print from 2023 made by the artist specifically for the ICA San Francisco's inaugural benefit, and based on his critically acclaimed exhibition at the institution. According to the ICA SF, "This work is a layered and complicated exploration of land acknowledgement, and a significant moment in Gibson's career trajectory. In these printed stills from *THIS BURNING WORLD*, we see the unique "masking" technique reminiscent of the patterning throughout Gibson's multimedia practice." Gibson is currently representing the United States at the Venice Biennale.



**PRAISE
SHADOWS**
ART GALLERY

From top to bottom in order:

Louise Nevelson, *Full Moon*, 1980

Polyester resin cast framed in wood

18 1/2 x 18 1/2 x 2 inches

Edition of 125. Published by Pace Editions.

Frank Stella, *Polar Co-Ordinates for Ronnie Peterson V*, 1980

Lithography, silkscreen and letterpress in 47 colours; Printed from 29 plates, 17 stencils, and 1 block.

38 x 38 1/2 inches.

Edition of 100.

Jeffrey Gibson, *Moss and Sunshine (THIS BURNING WORLD)*

Fine Art pigment print

30 x 40 inches

Edition of 3 + 3 APs.

Yu-Wen Wu, *Radiant Pearl*, 2023

Signed and editioned by the artist

Lithograph in five colors on Somerset radiant white paper

Printed by Universal Limited Art Editions (ULAE)

38 1/4 x 30 1/4 inches (paper size)

Edition of 20 + 4 APs

Crystalle Lacouture, *Same Skies (For Elizabeth Bishop)*, 2024

Signed and editioned by the artist

5 color subtractive woodcut on Rives BFK

22 x 30 inches (paper size)

14 x 23 3/4 inches (image)

Edition of 4

Yaron Michael Hakim *Feathers*, 2023

Serigraphy on paper

26 x 19 inches

Courtesy the artist and Sargent's Daughters, New York and Los Angeles.

Yuri Shimojo, *Photosynthesis*, 2005

Signed and titled on bottom left

Silkscreen Print on Nepalese Handcrafted Paper

18.5 x 26 inches

Edition of 50. Printed by Buddha Cat Press, CA.

Chloe Alexander, *Close Your Eyes, Make a Wish*, 2022

Silkscreen collage

30 x 20 inches

Edition of 10

Polly Apfelbaum, *Emperor Shout*, 2015

Woodblock print on Hiromi Handmade DHM-11 Triple Thick

25 3/8 x 25 3/8 inches

Edition of 35. Published by Durham Press, PA. Courtesy the artist and Durham Press, PA.

About Praise Shadows Art Gallery

Praise Shadows Art Gallery is a contemporary art program based in the Boston area with a focus on exceptional artists working in all artistic disciplines. Our worldview is informed by the notion that the artworld's untapped and unrecognized potential is worth cultivating, supporting, and championing. Since our founding in December 2020, the gallery has placed artworks by our artists in esteemed public collections, and our exhibitions have been covered widely in major international media outlets. Our work is grounded by partnering closely with artists to develop opportunities in traditional and emerging models of creativity and entrepreneurship—exhibitions, commissions, brand partnerships, new technologies, and original concepts that no one has ever tried before. www.praiseshadows.com

###